



Helping form the circle supporting small charities are, from left, Simon Bedbrook, Sophie Chamberlain and Simone Eley. Photo: Billie Fairclough

# How to turn a grand into \$100,000

By **KERRY FAULKNER**

**A small group of caring young West Australians is at the core of an off-beat money-raising venture called Impact100 WA that will benefit little-known charities.**

Friends and co-founders Simon Bedbrook and Sophie Chamberlain said it began with a conversation about finding a way to match people interested in donating money with charities most in need.

The concept of 100 people banding together and donating \$1000 each to get a bigger bang from their charitable contributions was born.

Four small charities would be invited to make presentations to the members at an annual dinner.

Diners would vote to determine the most worthy cause, which would receive the money.

Simon said they did not know it at the time, but the model had been operating in the US since 2001 as a "giving circle".

The original circle there has generated \$1.8 million in grants and spawned 14 new circles.

Simon is founder of Bedbrook Financial Services, and his grounding in charitable work goes back to his grandfather, Sir George Bedbrook, who had established three charities by the age of 32, including the Paraplegic Benefit Fund.

Simon said while he had been involved with those charities from an early age, his real passion was not ignited until an "incompetent" chairman threatened to destroy one of them.

"That's when I really got emotionally involved in it," he said.

"The Impact100 concept is so simple and yet so focused.

"We know that lots of people already have charitable commit-

ments and interests but there is a real opportunity to get involved with local charities with smaller profiles and see what difference giving your money can make."

Impact100 WA is led by a committee of nine, including Simone Eley, of Nedlands, who joined after its founders asked for some guidance.

Her usual work is as WA manager for Australian Philanthropic Services, setting up personal charitable foundations for wealthy families.

She said Impact100 WA struck her as a good idea because it gave people an opportunity to increase the effect of their donations.

In addition, people could give knowing the recipient charities were well researched and reputable.

"In my other work I deal with high-net-worth clients, but this is more for your average person," she said.

"A thousand dollars is still a little more than most people would consider giving, but if they thought about it they could actually afford to give it.

"It just pushes people that little bit more."

The first donation will be made to a charity supporting disadvantaged young people.

Sophie said that, as parents, it was an area close to their hearts.

"If you sort out the problems people have as youths then you are not going to have problems later – it was a no-brainer for me," she said.

The inaugural giving circle has 46 members and will be launched on May 22 at Government House.

For more information go to [www.impact100wa.org.au](http://www.impact100wa.org.au).

# Crims overload courts

**The Supreme Court needs more judges.**

In the court's 2011 review, Chief Justice Wayne Martin said the court's workload had significantly increased.

"Given the growth in the population of our state, and the substantial growth in commercial activity, it is inevitable that the work of the court will continue to increase," Chief Justice Martin said.

"Until now, we have been able to manage the increasing caseload by improving efficiency, particularly through improved case management processes and the effective use of alternative dispute resolution.

"However, as many of the available efficiency gains have now been harvested, it seems inevitable that backlogs and times to finalisation will increase unless our judicial resources are increased to match our increase in case-load."

Chief Justice Martin said there had been more applications for property repossession following financial default, and in dealing with applications brought under the Dangerous Sexual Offenders Act.

"Alterations to the penalties

imposed for criminal offences can also have a significant impact on the court's workload, as occurred when the penalty for arson was increased to life imprisonment, thus bringing those cases within the exclusive jurisdiction of the court," he said.

There had also been increases in less well-known work areas, like applications for forfeiture of property under the Criminal Property Confiscation Act, and work over issuing of warrants for surveillance devices and related activities.

# Bus lane for Mounts Bay

**A \$3.8 million bus lane is to be built along Mounts Bay Road to speed up the ride into the city.**

Transport Minister Troy Buswell told Parliament on Wednesday the priority bus lane was part of a \$100 million package to ease traffic congestion in Perth's CBD.



# Aged Care Open Day Regis Hollywood

**Regis Hollywood**  
118-120 Monash Avenue, Nedlands

For more information:  
1300 998 100  
[advice@regis.com.au](mailto:advice@regis.com.au)  
[www.regis.com.au](http://www.regis.com.au)

**Employment and volunteer opportunities available**

Come down and meet us on-site



Regis Hollywood is opening its doors so you can see first hand how aged care is changing.

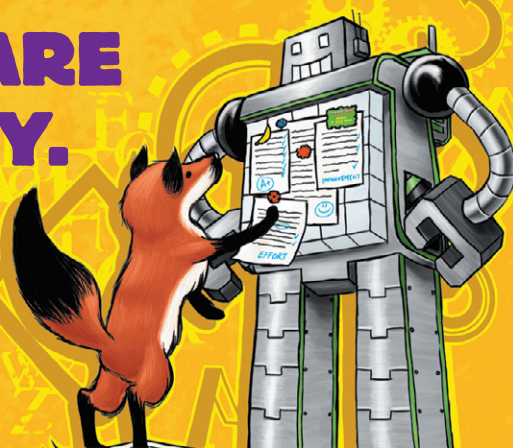
Please join us for a tour of our three specialist facilities, meet our staff and residents and enjoy light refreshments prepared by our on-site chef.

- Three specialist aged care facilities
- Large single rooms with en suites and kitchenettes
- Day Therapy Centre and GP on-site
- Close to shopping, local transport and community centres
- Daily activities, special interest groups and group excursions
- Low, High, Dementia and Respite Care available

**Opening times:**  
10:30am to 3:30pm Thursday 17 May

Regis is living with support

**YOUR CHILDREN ARE AMAZING ALREADY. WE JUST HELP THEM PROVE IT.**



From Pre-primary to Year 10, NumberWorks'nWords after-school tuition brings out the best in Aussie students by:

- tailoring lessons according to each individual's needs
- setting achievable goals and monitoring their progress
- developing our own programmes using only qualified Maths and English experts

**Maths & English FREE ASSESSMENT BOOK NOW!**

[numberworksandwords.com](http://numberworksandwords.com)  
Subiaco Ph 9388 3727

**NumberWorks'nWords**  
Specialist Maths tuition and English tuition